

OUTDOOR FACILITY – PLEASE DRESS FOR WEATHER

DATE: _____

TIME: _____

PLACE: _____

12772 NINTH LINE _____

STOUFFVILLE, ON _____

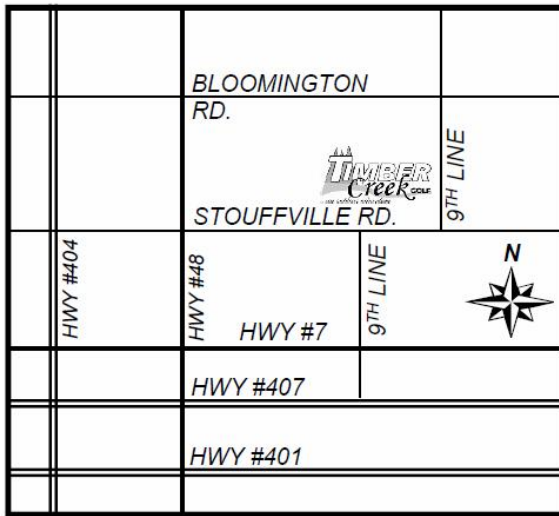
R.S.V.P.: _____

YOU ARE INVITED
TO A BIRTHDAY PARTY FOR.

SOMMER TIME FON!

- LIT FOR EVENING PLAY
- SNACK & DAIRY BAR
- DRIVING RANGE
- 7 UNIT BATTING CAGES
- JUMPING CASTLE & INFLATABLE SLIDE
- THE LOGGING CAMP COURSE
- THE SHIPWRECK COURSE
- 37 HOLES OF ADVENTURE MINI GOLF

TIMBER CREEK GOLF & FAMILY FON CENTRE



NOTE: MAP NOT TO SCALE

LOCATED EAST OF HWY 48 ON 9TH LINE, 1 km NORTH OF STOUFFVILLE MAIN STREET

TELEPHONE: 905.642.5174
 WEBSITE: www.timbercreekgolf.ca

YOU ARE
 INVITED TO A
 BIRTHDAY PARTY
 AT
 TIMBER CREEK GOLF

